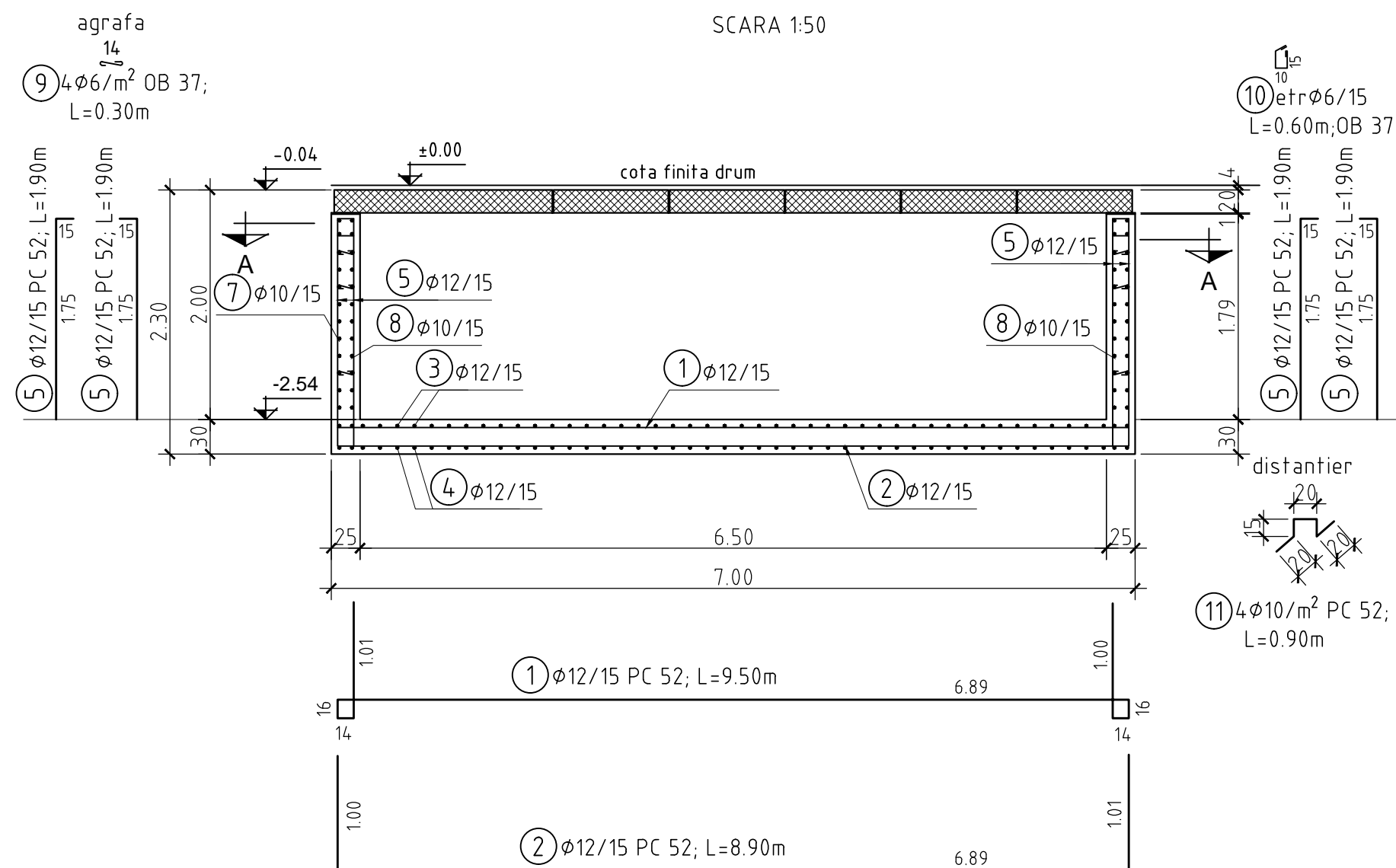


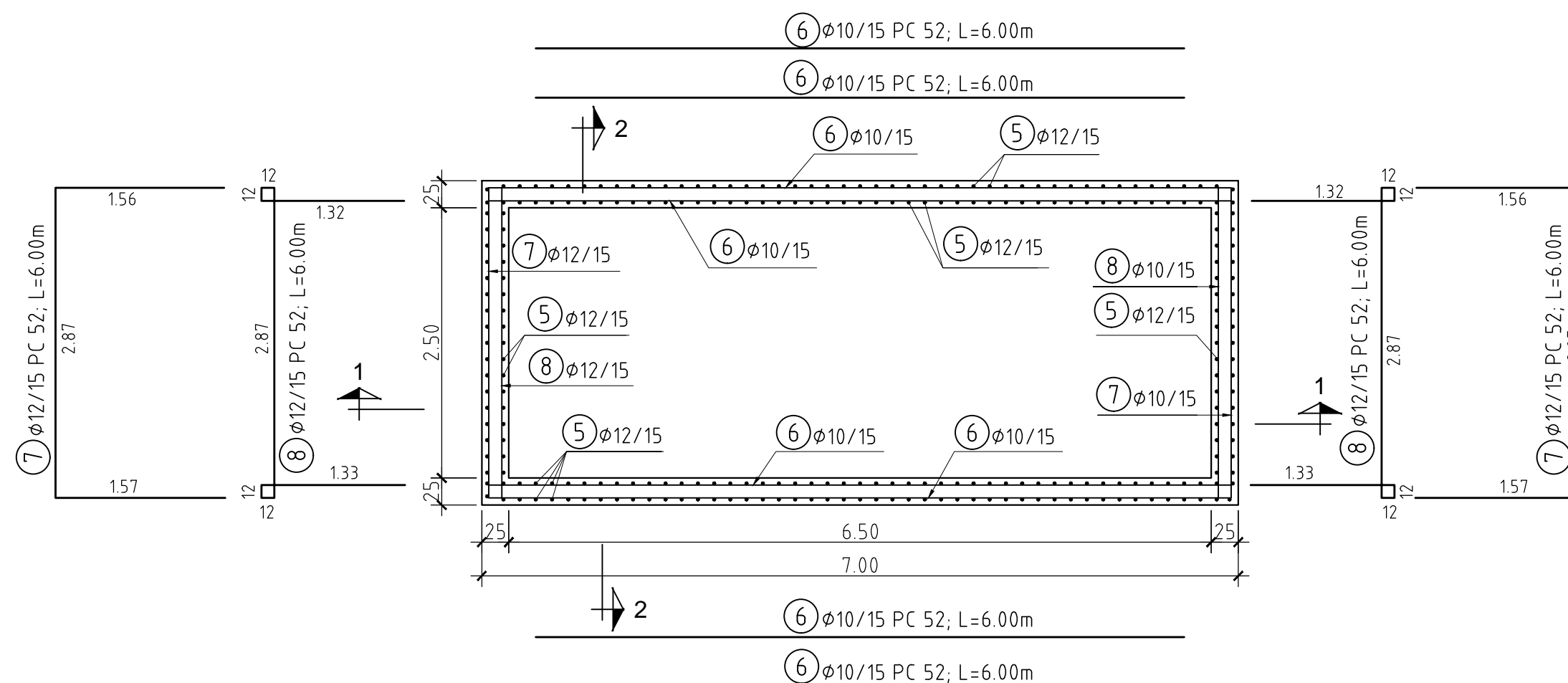
## SECTIUNEA 1-1

SCARA 1:50



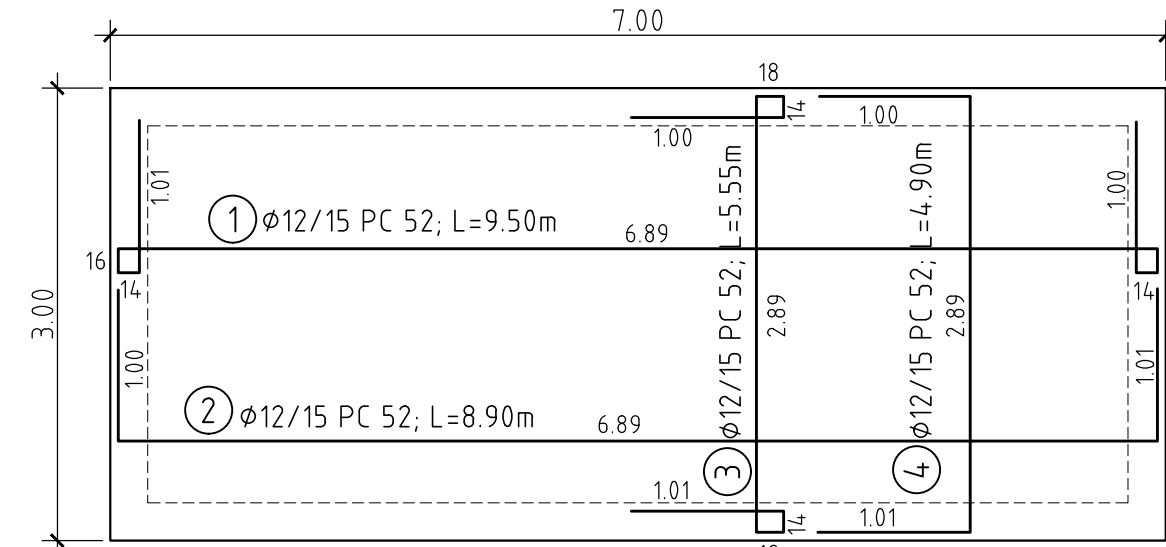
## SECTIUNEA A-A

SCARA 1:50



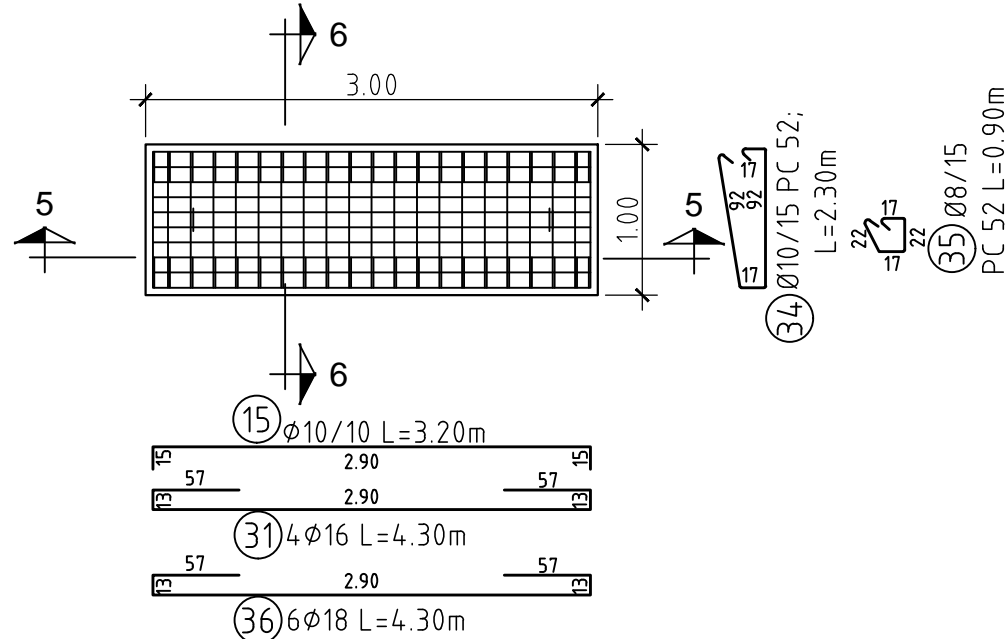
## ARMARE RADIER

SCARA 1:50



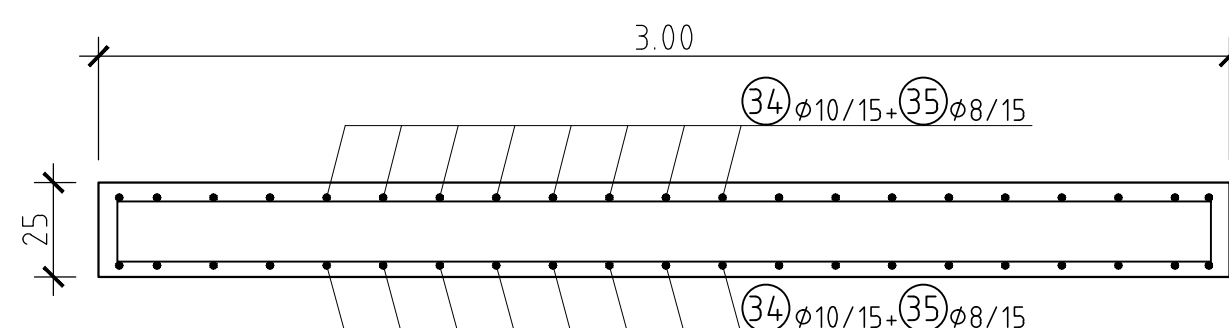
## ARMARE PLACA PREFABRICATA P2-5buc

SCARA 1:50



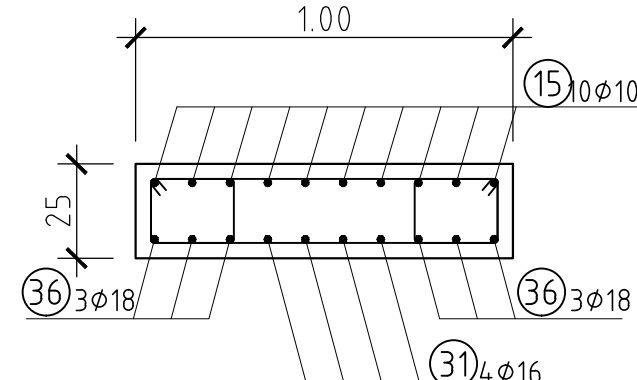
## Sectiunea 5-5

SCARA 1:20



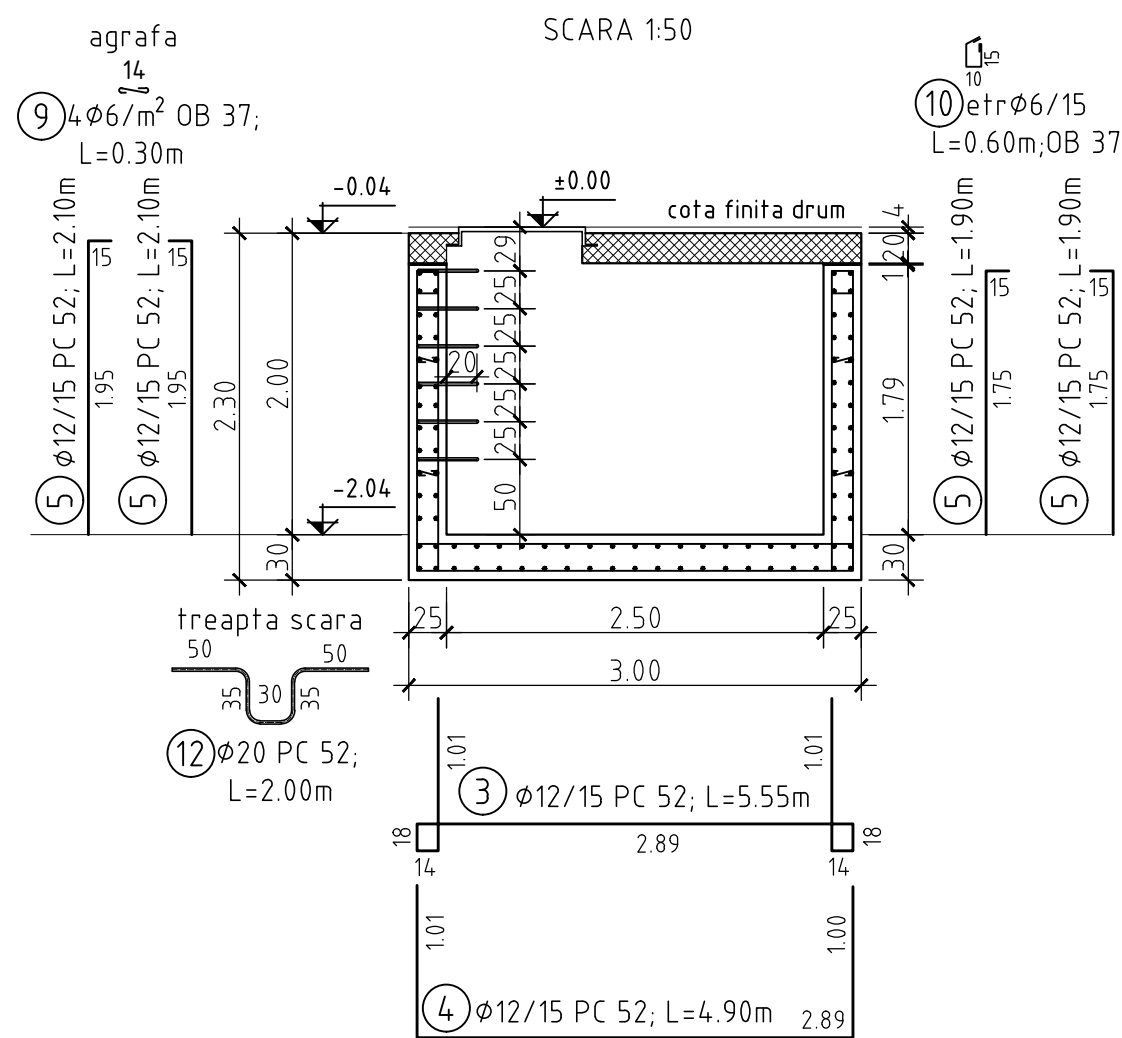
## Sectiunea 6-6

SCARA 1:20



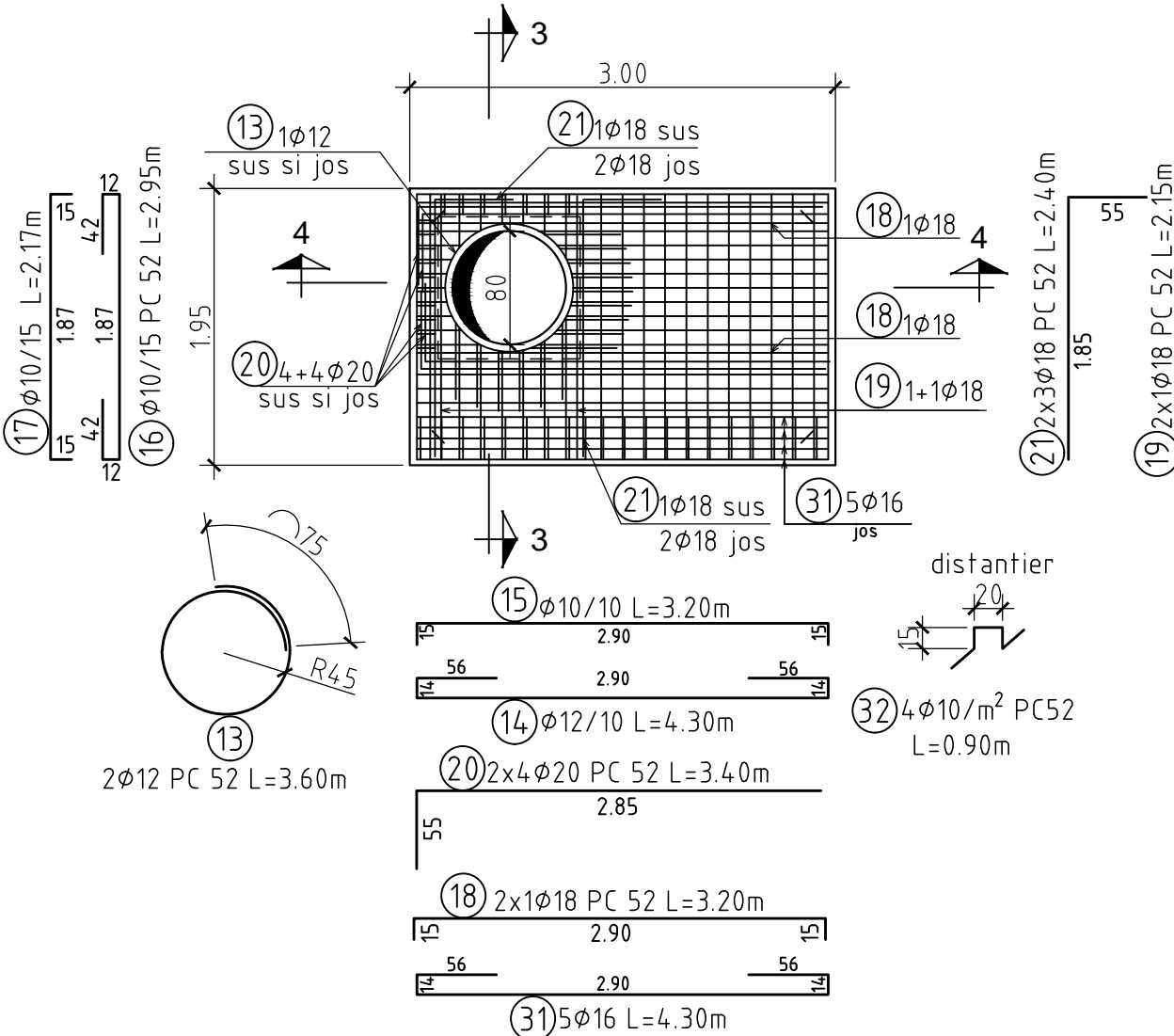
## SECTIUNEA 2-2

SCARA 1:50



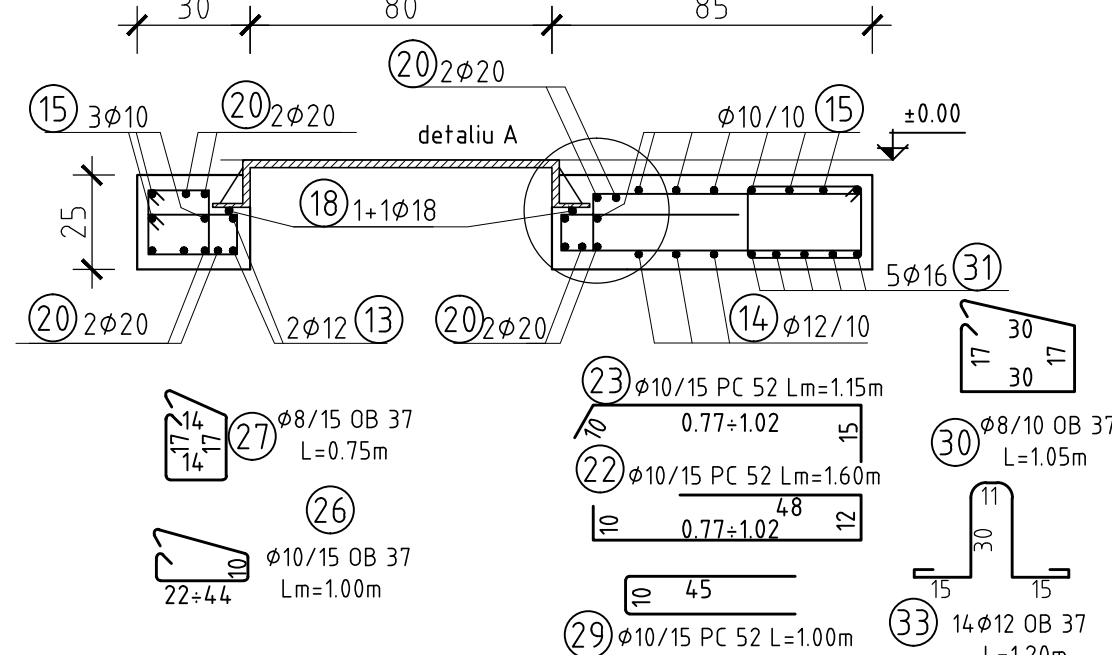
## ARMARE PLACA PREFABRICATA P1

SCARA 1:50



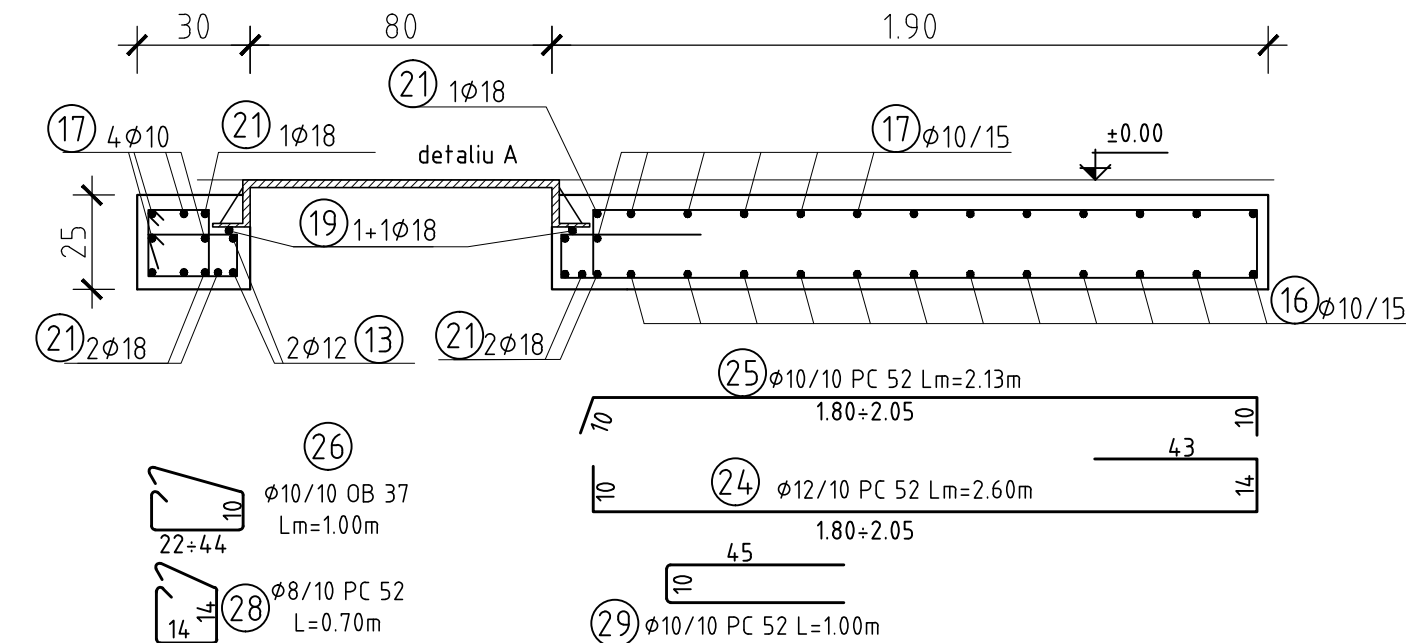
## Sectiunea 3-3

SCARA 1:20



## Sectiunea 4-4

SCARA 1:20



## Extras de armatura

Marca	ø	Buc	Lungime	OB 37							
				ø 6	ø 12	ø 8	ø 10	ø 12	ø 16	ø 18	ø 20
1	12	22	9.50					209.00			
2	12	22	8.90					195.80			
3	12	48	5.55					266.40			
4	12	48	4.90					235.20			
5	12	254	2.10					533.40			
6	10	48	6.00					288.00			
7	12	24	6.00					144.00			
8	12	24	6.00					144.00			
9	6	130	0.30	39							
10	6	124	0.60	74.4							
11	10	65	0.90				58.50				
12	20	6	2.00							12.00	
13	12	2	3.60					7.20			
14	12	5	4.30					21.50			
15	10	66	3.20				211.20				
16	10	14	2.95				41.30				
17	10	17	2.17				36.89				
18	18	2	3.20						6.40		
19	18	2	2.15						4.30		
20	20	8	3.40							27.20	
21	18	6	2.40							14.40	
22	10	9	1.60				14.40				
23	10	9	1.15				10.35				
24	12	9	2.60					23.40			
25	10	9	2.13				19.17				
26	10	18	1.00				18.00				
27	8	8	0.75			6					
28	8	10	0.70			7					
29	10	18	1.00				18.00				
30	8	20	1.05			21			107.50		
31	16	25	4.30				75.60				
32	10	84	0.90					253.00			
33	12	14	1.05		14.70						
34	10	110	2.30								
35	8	220	0.90			198					
36	18	6	4.30						64.00	25.80	
37	12	32	2.00						9.40		
38	12	4	2.35								
ml/ø				113.40	14.70	232.00	1044.41	1853.30	107.50	50.90	39.20
kg/ml				0.222	0.888	0.395	0.617	0.888	1.578	1.998	2.466
kg/ø				25.1748	13.054	91.64	644.40	1645.73	169.64	101.70	96.67
TOTAL				38		2750					

NOTA:  
-Acoperirea nominala cu beton a armaturilor este:

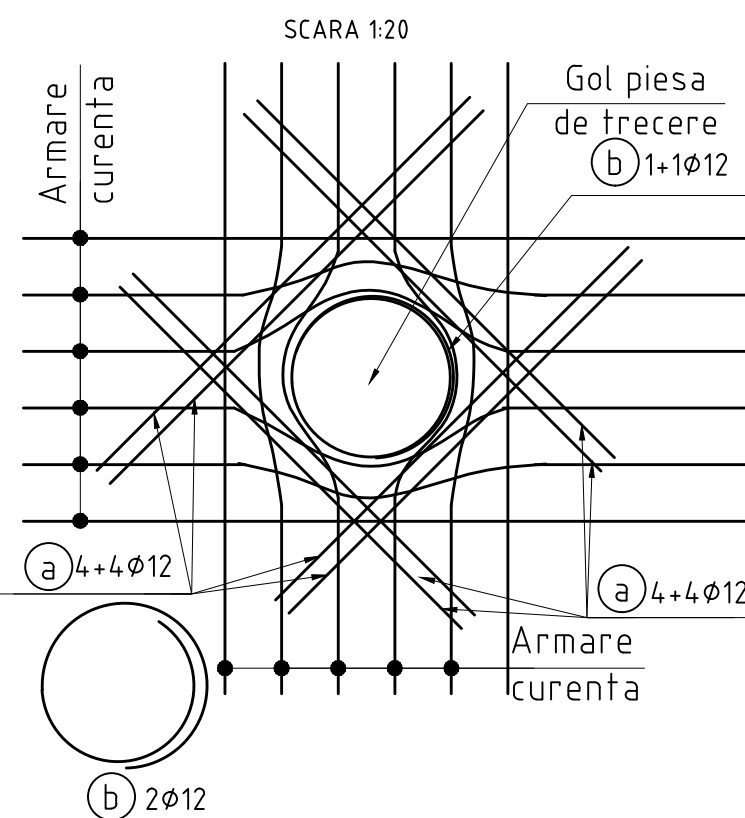
- radier 45mm
- pereti 40mm
- placa interior 20mm
- exterior 30mm

-Zona superioara a caminului se va betona pana la cota 0.00(cota finita drum), daca partea carosabila nu este din asfalt.  
-Prezenta plansa se va citi impreuna cu plansele de instalatii hidraulice.  
-Capatul va fi carosabil cu rama patrata, clasa D 400.  
-Dimensiunile partiale ale armaturilor sunt cotate la interior.

BETON DE EGALIZARE  
BETON ARMAT  
OTEL BETON

C8/10,X0,Dmax 32,S3,CEM II B-M (S-LI) 32.5 R  
C 25/30, XC4, XF3, C10.2,Dmax 22,S3,P4,CEM II/A-S 32.5R  
OB 37, PC 52

## Detaliu armare goluri piese de trecere



Lungimea si marile barelor a si b

DN mm	Bara marca a	Bara marca b
500	37 2.00	38 2.35

Rev	Num	Ver	Aprb	Data	Descriere
-----	-----	-----	------	------	-----------

Autoritatea contractanta: S.C.AQUACARAS S.A. CARAS SEVERIN

AQUACARAS  
Adresa: P-104 Repetitor nr. 7, Raia  
Jud. Caras Severin  
Tel.: +40 255 212 458  
Fax: +40 255 214 421  
E-mail: office@aquacaras.ro

Proiectant: **Consorțiu S.C Eptisa Romania S.R.L. si Eptisa Servicios de Ingenieria S.L.**  
Sof. Dulegh-Pantelimon nr. 42, RAMS center, et. 5, corp A,  
Sector 3, București  
Tel: +40 21 301 14 70  
Fax: +40 21 301 14 80  
www.eptisa.com

Proiect: **MODERNIZAREA INFRASTRUCTURII DE APA SI APA UZATA IN JUDETUL CARAS SEVERIN - AGLOMERAREA RESITA**

Plansa nr.

Retele apa  
Camin tip 29-Plan Armare

Desenat: Ing. B. Paraschiv Data: Aprilie 2013

Verificat: Ing. M. Serbanoiu Data: Aprilie 2013

Aprobat: Ing. D. Spiridon Data: Aprilie 2013

Plansa nr. Revizia

CS-RE-PT/DA-A-R-29.2 0